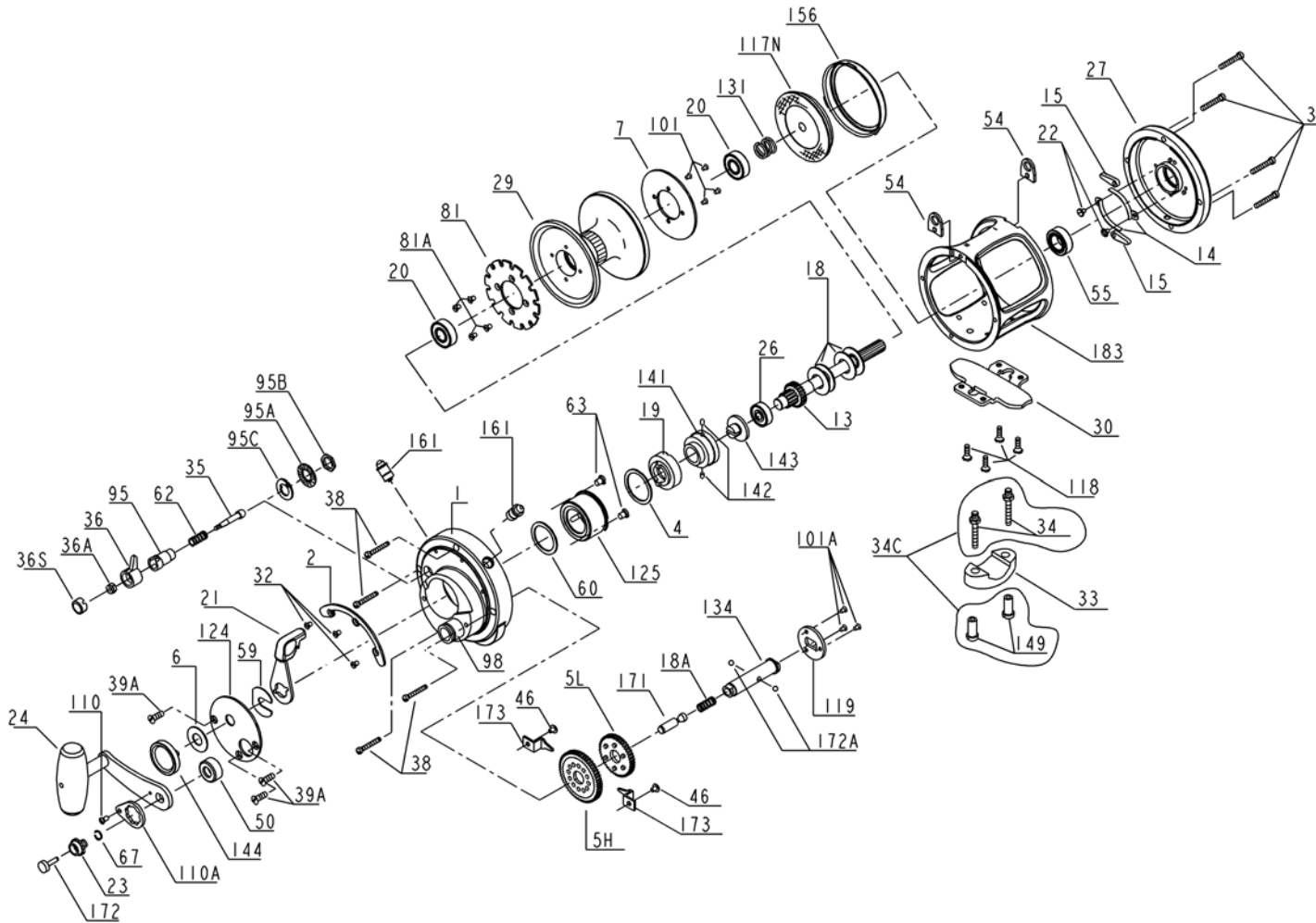


PENN PARTS LIST FOR MODEL 16S



KEY NO.	DESCRIPTION	PART NO.
15	Dog (2 req.)	015 050
18	Disc Clutch Spring (4 req.)	018 020
18A	Gear Stud Spring	018 349
19	Eccentric Cam	019 016S
20	Spool Ball Bearing (2 req.)	020 704
21	Eccentric Lever	021 016S
22	Dog Spring Screw (2 req.)	022 109
23	Handle Screw	023 016S
24	Handle Complete	024B016S
26	Ball Bearing	026 040
27	L.S. Plate	027 016S
29	Spool	029L016S
30	Stand	030 012LT
31	L.S. Plate Screw (4 req.)	031T020
32	Quadrant Screw (3 req.)	110T050
33	Rod Clamp	033 113
34	Clamp Screw (2 req.)	034 114HLW
34C	Rod Clamp Screw w/Nut	034C114HLW
35	Click Tongue	035 080TN
36	Click Button	036N050
36A	Click Button Nut	036 700
36S	Click Button Cap	036S080ST
38	R.S. Plate Screw (4 req.)	038T050
39A	Bridge Cover Screw (3 req.)	039A080S
46	Cam Housing Screw (2 req.)	046A704
50	Gear Stud Shield	050 016S
54	Harness Lug (2 req.)	054 016S
55	Ball Bearing	055 080ST
59	Slotted Washer	059 050
60	Backing Washer	060 050
62	Click Spring	018 060
63	Hold Down Screw (2 req.)	063 349
67	Plunger Cap Retaining Ring	067 016S
81	Ratchet	081 016S
81A	Ratchet Screw (4 req.)	101 030
95	Click Tongue Bushing	095 080
95A	Click Bushing Washer	095A020
95B	Click Bushing Nut	038 710
95C	Click Bushing Washer	095A050
98	Bridge Bushing	098 016S
101	Drag Washer Screw (4 req.)	101 030
101A	Coupling Plate Screw (3 req.)	101 050S
110	Handle Lock Screw	110 050
110A	Handle Locking Plate	110A016S
117N	Drive Plate w/ Drag Washer	117N016S
118	Stand Screw (4 req.)	118 080
119	Coupling Plate	119 030S
124	Bridge Cover	124 016S
125	Cam Housing	125 030S
131	L.S. Bearing Spring	041 016S
134	Gear Stud	134 016S
141	Cam Follower	141 016S
142	Cam Follower Pin (2 req.)	142 050
143	Adjusting Screw	143 030
144	Preset Knob	144 016S
149	Rod Clamp Nut (2 req.)	149 045
156	Drag Cover	156 016S
161	Locating Pin Assembly (2 req.)	161C070
171	Plunger	171 016S
172	Plunger Cap	172 016S
172A	Shifting Ball (2 req.)	172A016S
173	Gear Retainer (2 req.)	173 050S
183	Tube Frame	183 016S

KEY NO.	DESCRIPTION	PART NO.
1	R.S. Plate Assembly	001 016S
2	Quadrant Ring	002 016S
4	Cam Thrust Washer	004 030
5H	Main Gear High Speed	005 016HS
5L	Main Gear Low Speed	005 016LS
6	Spacer Washer	006 155
7	Metal Drag Washer	007 016S
13	Pinion Gear	013 016S
14	Dog Spring (2 req.)	014 016S